

Visual Guide Easy Read

UNREAL CITY

dreamthinkspeak/Access All Areas



What is a visual guide?

A Visual Guide has information and pictures to prepare you for your visit to the venue and performance.

If you have any questions, please contact **Brighton Dome**.



Phone 01273 709709



Email tickets@brightondome.org

UNREAL CITY



dreamthinkspeak/Access All Areas

What is the show?

unReal City is a work-in-progress project created by dreamthinkspeak and Access All Areas.

It is a virtual reality experience for two audience members at a time.

It is performed by learning disabled artists. It explores how we make connections with other people online and in real life.

You will explore a virtual world using a headset. You will also meet some performers in real life.

ACCESS ALL AREAS

Makes disruptive performance by learning disabled and autistic artists.

Through our performance company we support the development of some of the world's leading learning disabled creatives, and run a range of programmes for learning disabled people with a wide range of access needs.

dreamthinkspeak

dreamthinkspeak are internationally recognised as a key practitioner of site-responsive performance. Their work interweaves live performance with film, installation and technology to create extraordinary journeys that are ambitious in scale, visually layered and popular with audiences, wherever they performing.

ACCESS ALL AREAS



Where is the performance

Brighton Dome

What space is the show in?

The show is in The Founder's Room



Chill-Out Space

If you need to **chill out** in a **quiet space** you can go the Green Room.

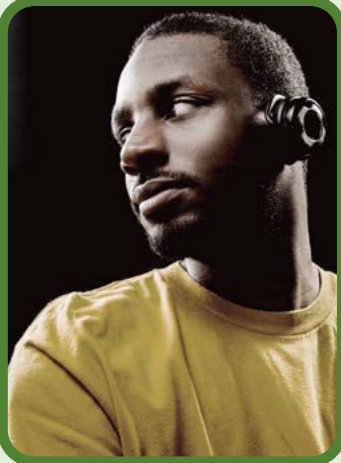
There will be directions to the Green Room or you can ask a member of the Brighton Dome Front of House staff.

UNREAL CITY

unReal City Ushers

An usher will meet you at the Entrance Foyer.

CAST



Lee Philips

Lee is an Access All Areas Associate Artist. He graduated from Access All Areas Performance Making Diploma at the Royal Central School of Speech and Drama in 2014.

Lee performed in 'The Trial' collaboration with Retz (now Rift) Theatre company in April 2014.

Lee has performed 'Eye Queue Hear' with Access All Areas for a UK tour in 2014-2017.

Lee and creative partner, Dayo have created a collective called 'Everyday Daylee' and their performance of #crazyfuturelove performed as part of the Occupy festival at BAC in March 2019 and at various festivals and gigs such as Bubble Club and the Autism Arts Festival, Uni of Kent 2019.

Lee recently performed in 'All Wrapped Up' with Oily Cart on a UK tour in 2019/20.

Lee also performs with London Bubble, Sardines Dance and Entelechy Arts.



Emma Selwyn

Emma graduated from Access All Areas' 2016 Performance Making Diploma at the Royal Central School of Speech and Drama.

Since then, they have performed 2 solo shows (My Hands and Feet are Wiggling and #Binariesbegone) and also performed as part of cabaret group Not Your Circus Dog in Not F**kin' Sorry. #Binariesbegone has also been performed at the Battersea Arts Centre and at the Autism Arts Festival.

Emma is currently working with Access All Areas as a co-director on the Transforming Leadership professional development programme.



Terry Huggett

Terry graduated from Access All Areas' 2015 Performance Making Diploma at the Royal Central School of Speech and Drama.

Since then Terry has continued to develop his piece 'Visions of Me'. His work aims to explore his own identity as well as blending the absurd with confronting topics.

Terry appeared in the giant outdoor theatre event 'ZARA' by Mind-The-Gap in summer 2019.

Terry is currently working with Access All Areas on the Transforming Leadership professional development programme and is an Associate Artist.



DJ (Housni Hassan)

DJ joined Corali as a performer in 2011. He has performed in “Origami Atoms” (2015), “Hearts and Faces” (2015) and “The People Race the fish” (2016). DJ’s first solo work, “The Manifesto for Perfect Cup of Tea” toured internationally, and “Over” (2016), his second piece, toured nationally.

DJ graduated from Access All Areas’ 2016 Performance Making Diploma at the Royal Central School of Speech and Drama. He performed in their 2018 production of MADHOUSE re:exit at Shoreditch Town Hall and The Lowry.

DJ has also performed as part of cabaret group Not Your Circus Dog in Not F**kin’ Sorry



Kirsty Adams

Kirsty graduated from Access All Areas’ 2016 Performance Making Diploma at the Royal Central School of Speech and Drama. In 2016 Kirsty performed in the Woman Centre Stage at the Hampstead Theatre. Kirsty was part of the Class Act project with the BBC in 2017.

Kirsty joined the Bareface Collective, since then they have performed Fix Us, at the Rosemary Branch, The Vaults, Watford and the Edinburgh Fringe Festival 2019.



Dayo Koleosho

Dayo graduated from Royal Central School of Speech and Drama in 2014, he has been part of Access All Areas for over 10 years and is also a trustee.

Dayo is part of the Access All Areas Professional Company and performed in MADHOUSE re:exit in 2017.

His TV credits include the 2012 Paralympics Opening Ceremony and he has appeared in BBC Doctors and Holby City. Dayo played Karl in Faith, Hope, and Charity at the National Theatre 2019, which toured Paris and Vienna in 2021.

Most recently Dayo played Philmore in Jitney at Leeds Playhouse.



Cian Binchy

Winner of the VAULT Festival People's Choice Award. Cian graduated from Access All Areas 2014 Performance Making Diploma at the Royal Central School of Speech and Drama.

Since then, Cian worked with Access All Areas to produce The Misfit Analysis which toured around the country, including the Edinburgh Fringe Festival and Mexico. In 2018 Cian played Tate in the ITV drama The Level.

Cian played an enormous baby in Access All Areas' MADHOUSE re:exit. Cian continues to write and perform his own poetry. Cian is passionate about raising awareness for people with Autism and learning disabilities.

Cian is currently working with Access All Areas as a digital influencer on the Transforming Leadership professional development programme.

In 2020 Cian appeared in the ITV Drama Grace.



Charlene Salter

Charlene is a graduate from the Performance Making Diploma at the Royal Central School of Speech and Drama run by Access All Areas.

A regular member of AAA's performance company, Charlene co-directed the Black Cab show 'Winged'. She has also facilitated workshops on the Access All Areas Take Part programmes including Spring Back, Departure Lounge and Black Cab. In Summer 2019, she appeared in the giant outdoor theatre event 'ZARA' by Mind-The-Gap which reached an audience of over 8,000.

Charlene is currently working with Access All Areas as a co-director on the Transforming Leadership professional development programme and sits on the Access All Areas board.



Eden West

Eden has been a performer from the age of six, when he trod the boards in his prep school Christmas play as Caesar Augustus!

He has since played lead roles in many musicals, and performed in West End shows, in Knight Crew at Glyndebourne, and with the English National Opera.

He now works professionally with Access All Areas and Vital Xposure, where he developed the role of Walter Riddle, the idiot savant! He recently graduated from Royal Central School of Speech and Drama and intends to continue in acting and performing for as long as he is able.



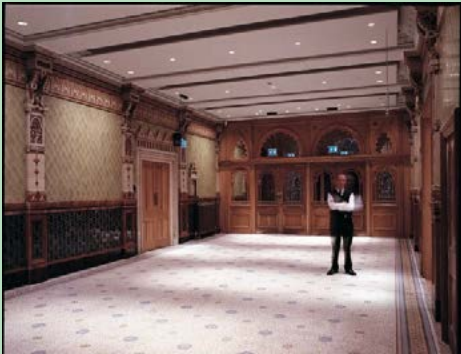
Information



Audience Information

- The performance lasts for about 40 minutes
- There is no interval
- You will be moving around in the performance
- There are opportunities to sit down
- Please go to the toilet before you go to the committee room foyer
- Please turn off mobile phones
- There are Visual Guides at the Box Office
- There will be staff to help you at all times
- If you need help you can put your hand up
- You will get a free programme at the end

ACCESS ALL AREAS



Where the show starts

You will **enter the foyer 10 minutes** before the show starts where you will show your ticket to the usher.

You will **hand in any coats and bags** and get a ticket to collect at the end.

You will **read a guide on the show** and what will happen.

The usher will show you how to **put on a headset.**

If you need help at any point in the experience then please raise your arm.



VR Headset

To enter the virtual world, you will be asked to wear a VR headset. An usher can show you an identical headset to the one you will be wearing before you enter the space.

You will be able to adjust the straps for comfort and change the brightness and volume settings as you need.

There will be an usher there to help you.

Once you are comfortable in the VR headset, the experience will begin.



The Show - Stage One

Once you are ready, an unReal City show room assistant will come and ask you to follow them into a white room.

There are 2 grey chairs and you will sit down and try on the headset.

You can adjust the sound and brightness levels.

The VR experience will begin. You will go into a studio apartment.

You can open doors and turn things on and off in the apartment. You can do this by using your voice or by pointing.

The usher will gently hold your wrist and elbow to guide you to stage two of the performance.

ACCESS ALL AREAS



Stage Two

Still in the virtual reality world, the experience will change to a café.

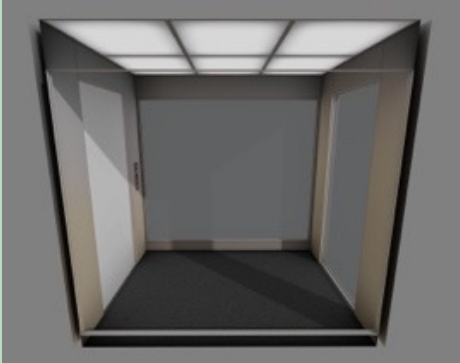
A virtual character will come and talk to you about life in unReal city.

The experience will then move to a cinema.

You will watch a video about unReal City.

You will be guided into the next room.

You will take off your headset and meet a character in real life. They will tell you that they are excited because they will be moving to unReal City soon.



Stage Three

You leave and put on a headset again.

You enter a lift.

You look out over unReal City.

You walk down a corridor and get to see the whole of unReal City.

You take off your headset and leave.

You collect your coats and bags and collect a programme back in the foyer.

After you look out over unReal City.

You will see an apartment that opens out onto the terrace via an open glass door. Inside are the residents you met in the café, who beckon you inside.



Stage Four

This is the same as stage 1.
You will be asked to sit down.

The residents are showing each other their new apartments and share this with you, they will offer you a seat. Just like before, the residents are in a separate room during this VR scene. After a short interaction, the residents have to leave in order to see a concert.

You take off your headset and follow the assistant out.

On the way out, you pass through another room, with the technical kit and show-running team, and see another resident on a chair, wearing a headset, as if they are acting out the same café scene you were a part of - but with the next set of audience.



The End

When you are guided out via the exit, you will come across a bench with the same two residents on it who you interacted with in the show.

When they see the audience, they ask if they could take a selfie of them and their friend.

ACCESS ALL AREAS



Access

If you have any access requirements you should tell Brighton Dome before you come to see the show.

Access Phone Number

012 7370 9709

access@brightondome.org

ACCESS ALL AREAS



If you want to contact Access All Areas, our details are below.

Call

020 7613 6445

Email

lucy@accessallareastheatre.org

Go online

www.accessallreastheatre.org